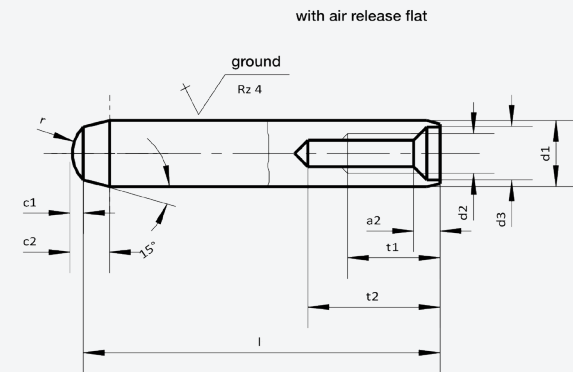


# DOWEL PINS

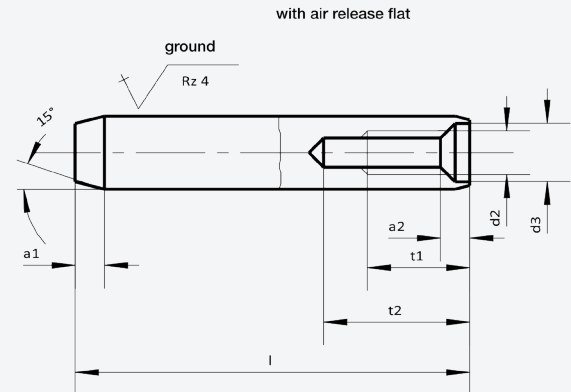
## Dowel pins with internal thread in lengths from 8-150 mm

Standard	Form	Tol.	Material	Ø (mm)
DIN 7979	D	m6	Hardened steel	3-30
DIN 7979	D	h6	Hardened steel	3-30
DIN 7979	D	m5	Hardened steel	3-30



- Hardened ( $60 \pm 2$  HRC) and ground, with internal thread and air release flat
- Chamfer and lens dome, end with thread slight chamfer
- C60Pb, 100Cr6

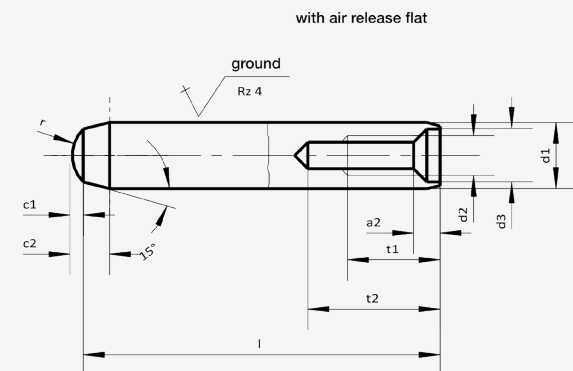
Standard	Form	Tol.	Material	Ø (mm)
DIN 7979	C	m6	Machining steel	4-30
DIN 7979	C	m6	1.4305	4-30



- Unhardened, with internal thread and air release flat
- Chamfer without crest, end with thread slight chamfer
- 11SMn30, 1.4305 (A1)

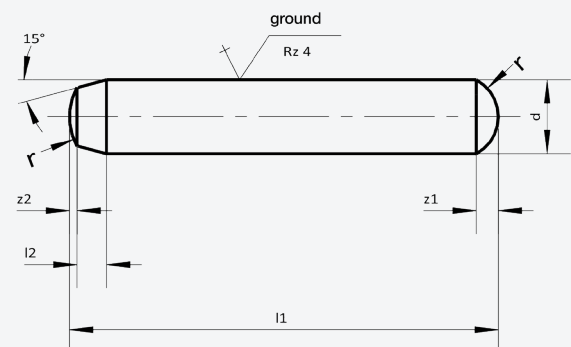
## Dowel pins with internal thread in lengths from 8-150 mm    Dowel pins without thread in lengths from 3-150 mm

Standard	Form	Tol.	Material	Ø (mm)
ISO 8735	A	m6	Hardened steel	3-30
ISO 8735	A	h6	Hardened steel	3-30
ISO 8735	A	m5	Hardened steel	3-30
ISO 8735	C1	m6	1.4034	3-30



- with internal thread and air release flat
- Chamfer and lens dome, end with thread slight chamfer
- Form A** Hardened and ground  
100Cr6 550-650 HV30
- C1** Hardened and ground  
1.4034 460-560 HV30

Standard	Form	Tol.	Material	Ø (mm)
DIN 6325		m6	Hardened steel	1-30
DIN 6325		h6	Hardened steel	1-30
DIN 6325		m5	Hardened steel	1-30

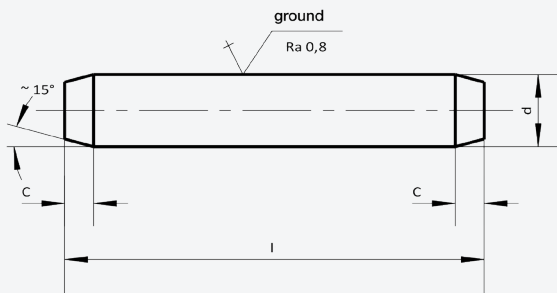


- Hardened and ground
- $60 \pm \text{HRC}$
- 1. Side Chamfer with lens dome
- 2. Side Lens dome
- C60Pb, 100Cr6
- Chamfered on both sides for smaller diameters, possible without lens dome (Form 1)

# DOWEL PINS

## Dowel pins without thread in lengths from 3-150 mm

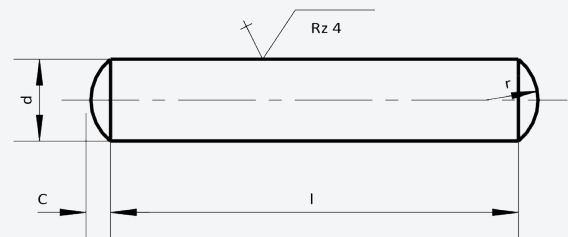
Standard	Form	Tol.	Material	Ø (mm)
ISO 8734	A	m6	Hardened steel	1-30
ISO 8734	A	h6	Hardened steel	1-30
ISO 8734	A	m5	Hardened steel	1-30
ISO 8734	C1	m6	1.4034, hardened	1-30



- **Form A** Hardened and ground  
100Cr6 550-650 HV30
- **Form B** Case-hardened and ground  
11SMn30/16MnCr5
- **C1** Hardened and ground  
1.4034 550-650 HV30
- Both ends chamfered, without lens dome

## Dowel pins without thread in lengths from 3-150 mm

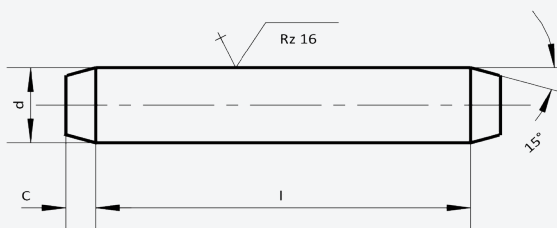
Standard	Form	Tol.	Material	Ø (mm)
DIN 7		m6	Machining steel	1-30
DIN 7		m6	1.4305	1-30
DIN 7		m6	1.4401	1-30
DIN 7		h6	1.4305	1-30



- Unhardened, 11SMn30, 1.4305 (A1), 1.4401 (A4)
- Load-bearing length counts, not total length
- **m6/h6** Lens dome on both sides

## Dowel pins without thread in lengths from 3-150 mm

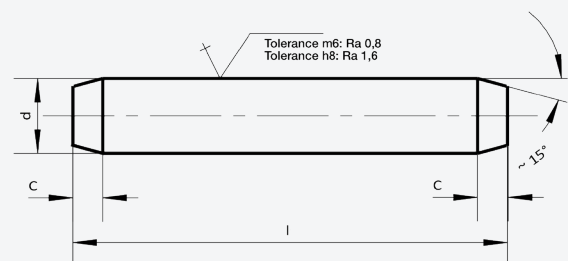
Standard	Form	Tol.	Material	Ø (mm)
DIN 7		h8	Machining steel	1-30
DIN 7		h8	1.4305	1-30



- Unhardened, 11SMn30, 1.4305 (A1), 1.4401 (A4)
- Load-bearing length counts, not total length
- **h8** Chamfer, without lens dome on both sides
- **h11** machined smooth, deburred on both sides

## Dowel pins without thread in lengths from 3-150 mm

Standard	Form	Tol.	Material	Ø (mm)
ISO 2338		m6	Machining steel	1-30
ISO 2338		m6	1.4305	1-30
ISO 2338		m6	1.4401	1-30
ISO 2338		h8	Machining steel	1-30
ISO 2338		h8	1.4305	1-30

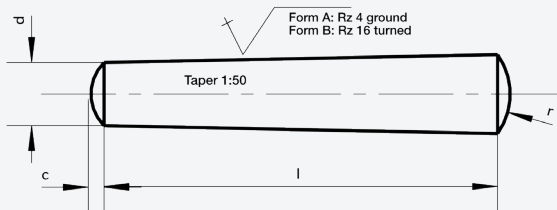


- Unhardened, 11SMn30, 1.4305 (A1), 1.4401 (A4)
- Total length counts, not load-bearing length
- Chamfered on both sides, without lens dome for all tolerances

# TAPER PINS

## Taper pins without thread in lengths from 6-120 mm

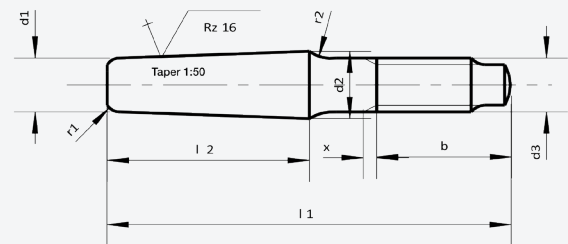
Standard	Form	Material	Ø (mm)
DIN 1	A	Machining steel	3-25
DIN 1	B	Machining steel	2-25
DIN 1	B	1.4305	2-25



- Form A Ground, not hardened  
11SMn30  
Lens dome on both sides  
Load-bearing length counts, not total length
- Form B Not ground, not hardened  
11SMn30 or 1.4305 (A1)  
Lens dome on both sides  
Load-bearing length counts, not total length

## Taper pins with threaded end and constant taper length

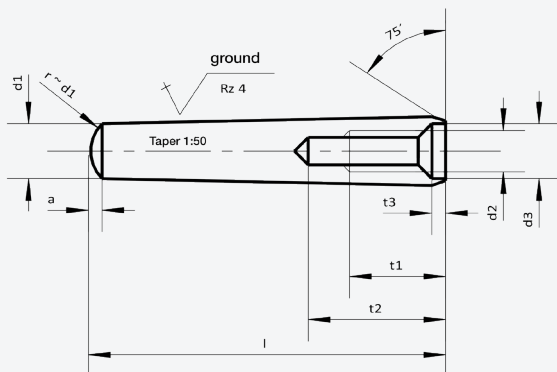
Standard	Form	Material	Ø (mm)
DIN 258		Machining steel	5-25



- Not hardened, not ground
- Taper pin with threaded pin and constant taper length

## Taper pins with internal thread in lengths from 16-120 mm

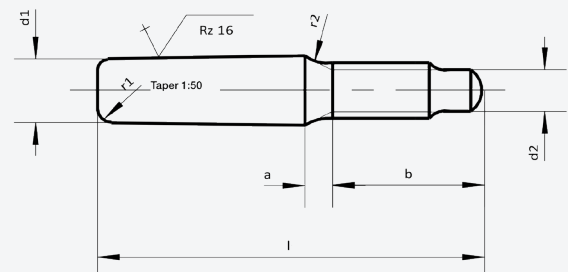
Standard	Form	Material	Ø (mm)
DIN 7978 (ISO 8736A)	A	Machining steel	5-25
DIN 7978 (ISO 8736A)	A	Hardened steel	5-25



- Ground
- 11SMn30 (not hardened) oder 100Cr6 (hardened)
- With internal thread

## Taper pins with constant length threaded ends

Standard	Form	Material	Ø (mm)
DIN 7977 (ISO 8737)		Machining steel	5-25



- Not hardened, not ground
- Taper pin with threaded pin and constant pin length